



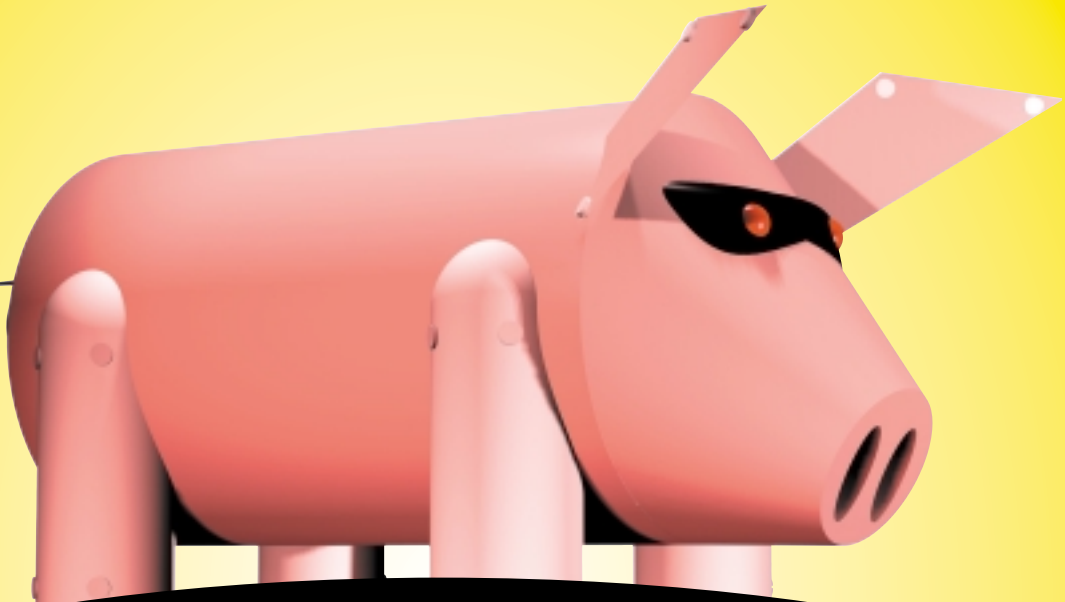


IF YOU'VE GOT BELTS AND PULLEYS TO ALIGN,
THIS WILL PUT YOU IN HOG HEAVEN.

**NEW
AND
IMPROVED**

-  **Sturdier aluminum housing**
-  **New feet fit in groove better**
-  **Recessed, stronger magnets**
-  **Ruggedized case**



BELT HOG™

BELT HOG PULLEY ALIGNMENT TOOL

Benefits of good alignment:

- Reduces downtime
- Extends belt and pulley life
- Reduces vibration and belt noise
- Minimizes unscheduled stops

Advantages of the Belt Hog:

- Accurate, measures from the pulley grooves where the belts operate
- Easy to use, no training required
- Fast, one person operation
- No need to remove the belts
- Measures vertical angle, horizontal angle and offset simultaneously
- Measures distances from 6" to 20 feet
- Measures pulley diameters 3" and larger



SPECIFICATIONS

Housing material: extruded aluminum (molded PA cover)
Dimensions: 2.40 x 3.00 x 2.35 in (h x w x d)
Weight: approximately 1.4 lbs
Battery type: (2) AAA Alkaline batteries
Operating time: 20 hours continuous operation
Measuring distance: 6" to 20 feet
Measuring accuracy: 3.49 mils/in (Better than 0.5mm or 0.2 degrees)
Pulley diameter range: 3" and larger
Pulley belt groove width: ALL known industrial groove profiles
Classification: Class 2 laser
Output power: <1mW
Laser wavelength: 630 – 675 nm

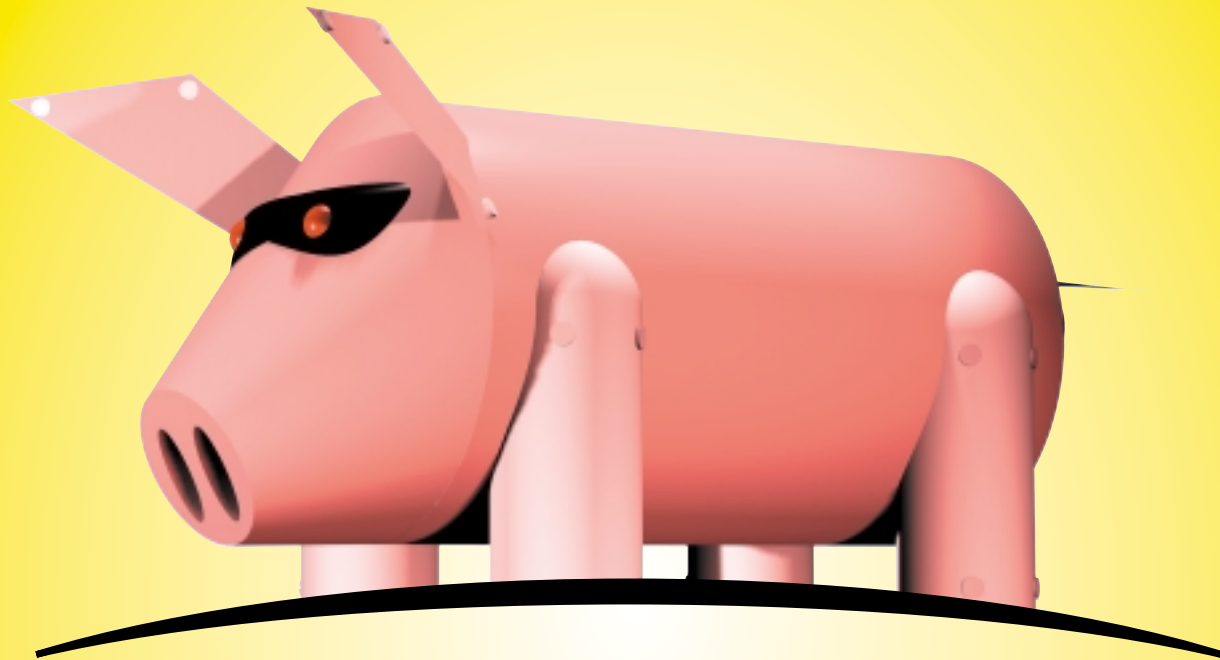
530G Southlake Boulevard • Richmond, VA 23236

Phone: (804) 379-2250 • FAX: (804) 379-0189

Or visit us at www.belthog.com

VibrAlign

**LASER SHAFT ALIGNMENT AT A PRICE
THAT WON'T BREAK THE PIGGY BANK!**



SHAFT HOG™

SHAFT HOG LASER SHAFT ALIGNMENT TOOL

Benefits of precision alignment:

- Reduced vibration levels
- Extends bearing and seal life
- Less unscheduled downtime
- Longer MTBF

Advantages of the Shaft Hog:

- Detector accuracy (0.0001")!
- Unique laser line
- Fast setup
- Easy operation

- Live values at all times
- Shows exactly what to do
- From small shafts to big ones
- **FREE**, downloadable software
- Complete training manual

SPECIFICATIONS

Measuring Units

Housing material: ABS plastic
 Type of laser: Diode laser
 Laser Wave Length: 670-675 nm
 Laser class: 2
 Maximum laser power: 1 mW
 Maximum distance
 between measuring units: 2.8 ft (850 mm)
 Type of detectors: Single-axis PSD
 Cable length: 5.2 ft (1.6 m)
 Dimensions: 3.4 x 3.1 x 1.5 in (87 x 79 x 39 mm)

Display Unit

Housing material: ABS plastic
 Display type: LCD 1.4 x 1.9 in (35 x 48 mm)
 Battery type: 2 x 1.5V "C" Alkaline (LR14)
 Operating time: 20 hours continuous operation
 Auto power off: After 1 hour if no keys are pressed
 Displayed resolution: 0.1 mil (0.0001"); (0.01 mm in metric mode)
 Dimensions: 9.1 x 3.2 x 2.4 in (230 x 81 x 62 mm)

Complete System

Shaft diameter range with chain: 18" maximum
 Accuracy of system: <2% +/-0.00039 in
 Temperature range: 32-140 °F (0-60 °C)
 Operating humidity: Non-condensing
 Weight in case: 10 lbs



530G Southlake Boulevard • Richmond, VA 23236

Phone: (804) 379-2250 • FAX: (804) 379-0189

Or visit us at www.shafthog.com

VibrAlign